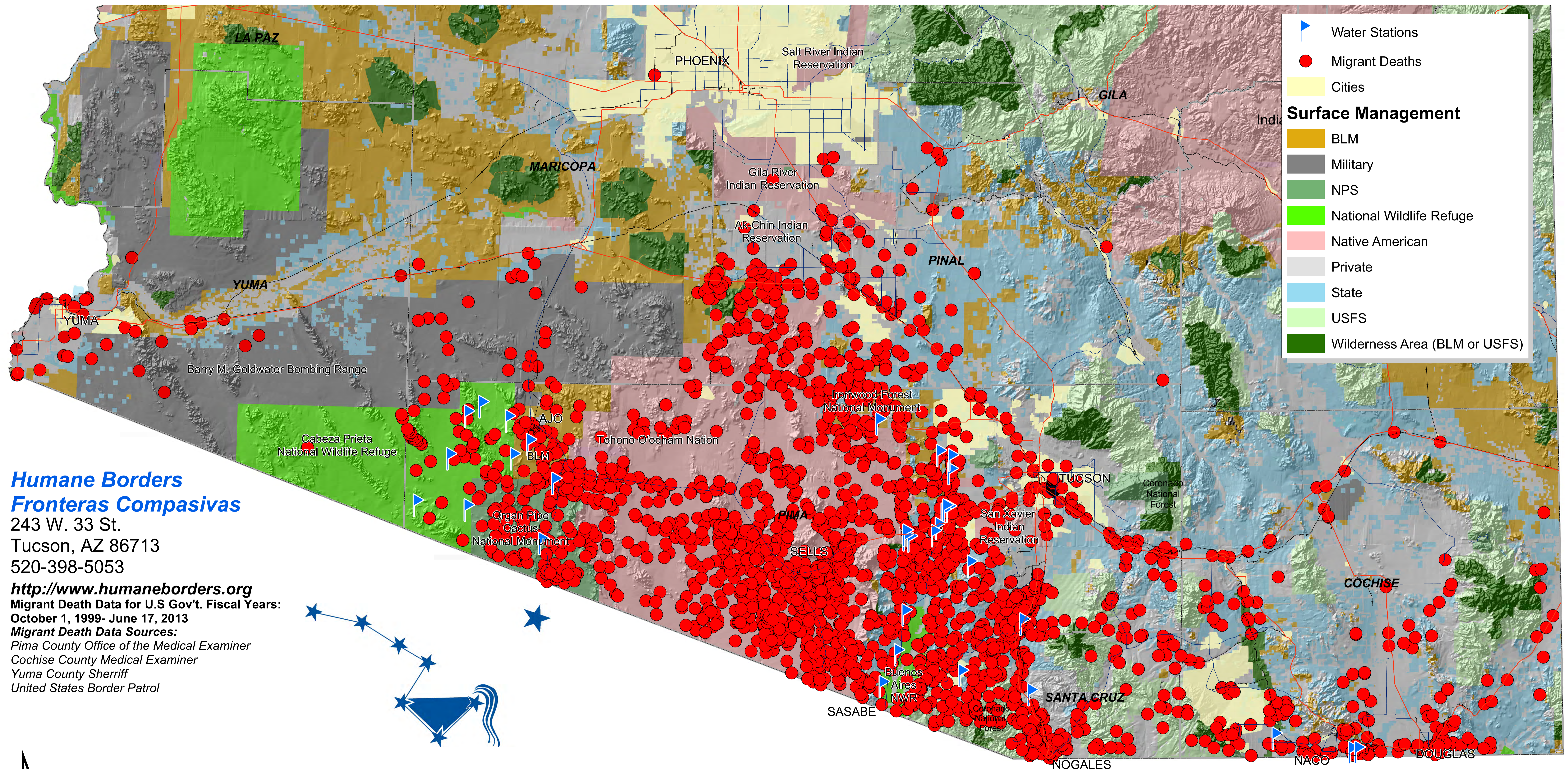


# 1999 - 2013 RECORDED MIGRANT DEATHS AND HUMANE BORDERS WATER STATIONS



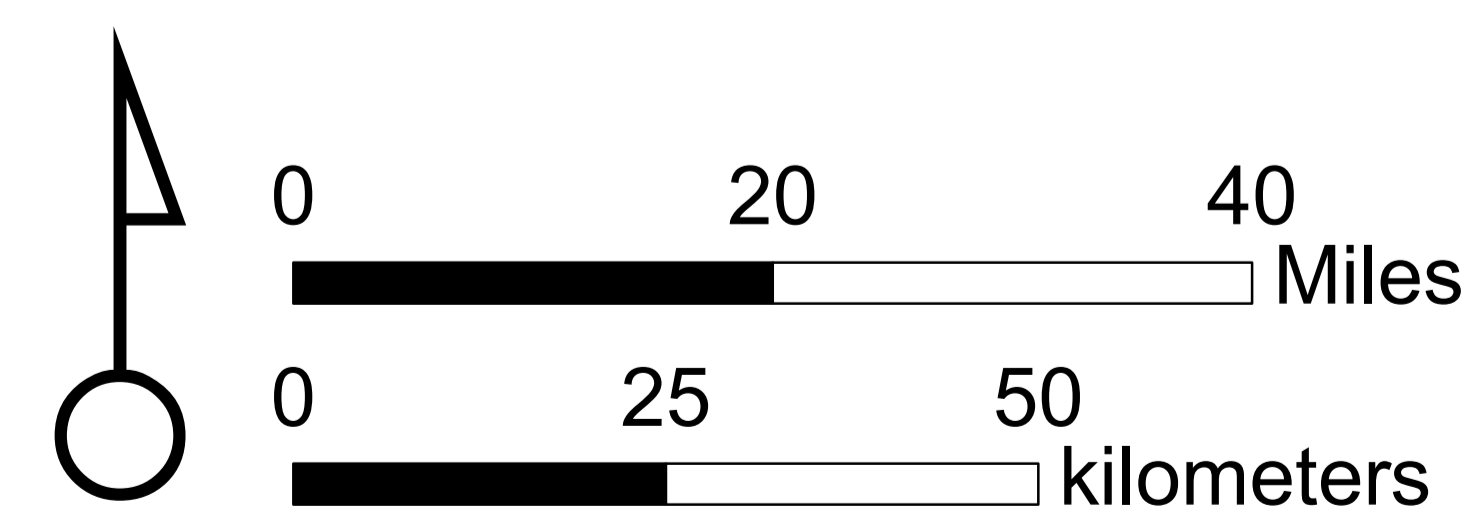
## Humane Borders Fronteras Compasivas

243 W. 33 St.  
Tucson, AZ 86713  
520-398-5053

<http://www.humaneborders.org>

Migrant Death Data for U.S Gov't. Fiscal Years:  
October 1, 1999- June 17, 2013

**Migrant Death Data Sources:**  
Pima County Office of the Medical Examiner  
Cochise County Medical Examiner  
Yuma County Sheriff  
United States Border Patrol



Between October, 1999 and June, 2013, Humane Borders collected data concerning 2,471 migrant deaths. This map shows those that can be located in space. Some dots represent more than one death.

*Over the past 13 years, Humane Borders has deployed equipment for over 80 water stations at remote, strategic locations in Mexico and the USA.*